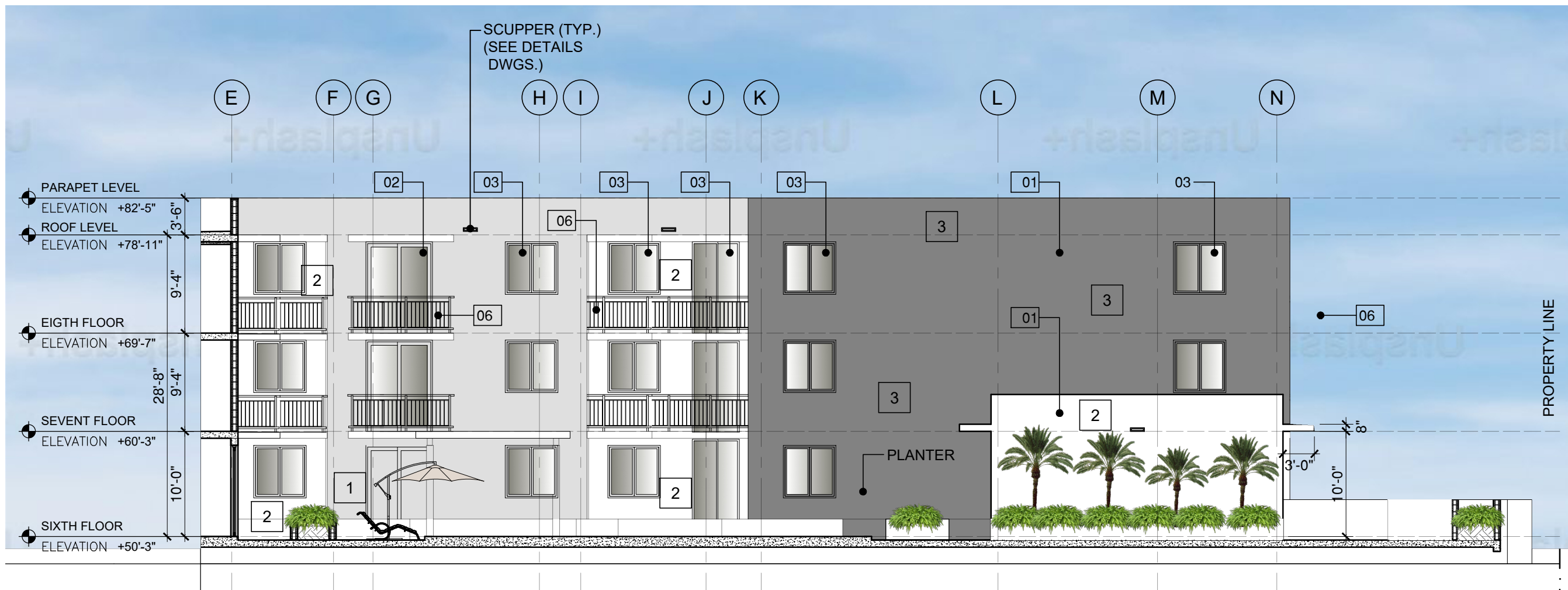


ELEVATION A

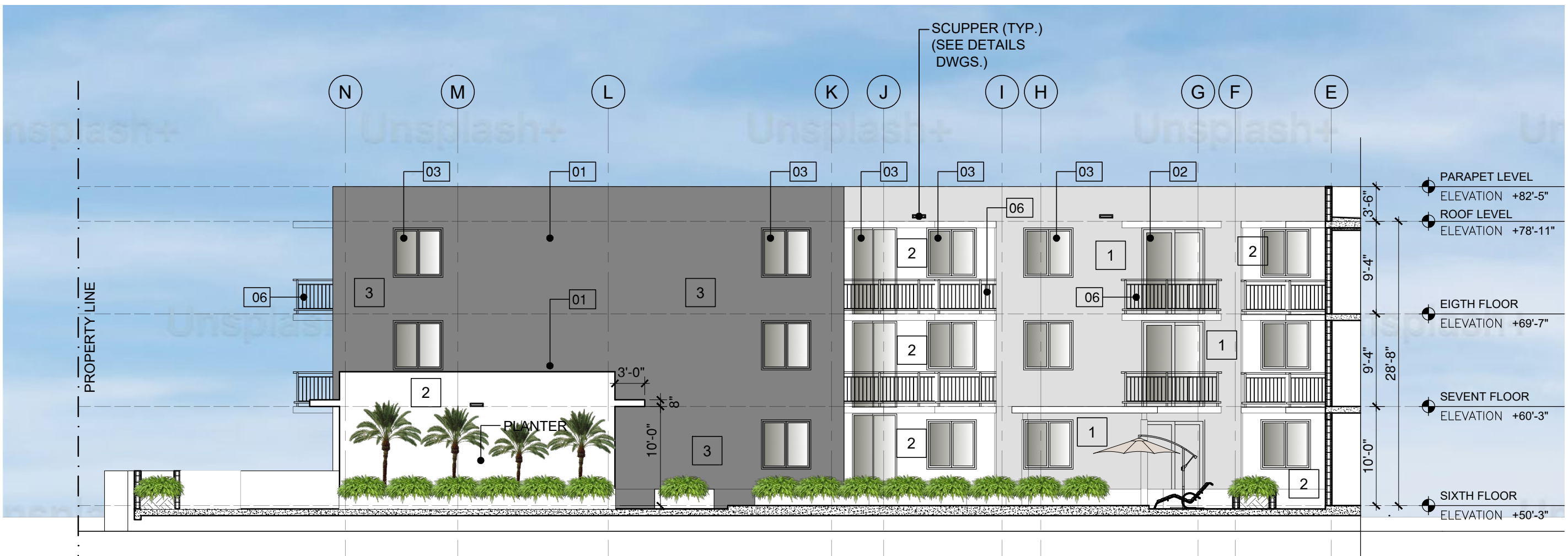
SCALE: 1"= 3/32"

MATERIAL LEGEND	
KEY VALUE	KEYNOTE DESCRIPTION
01	MASONRY: CMU/CONCRETE SUBSTRATE W/SMOOTH STUCCO FINISH, HIGH BUILD, ACRYLIC WATERPROOFING COATING (THOROCOAT BY BASF BUILDING SYSTEMS, OR ACCEPTABLE EQUIVALENT). COLOR PAINT TO BE SELECTED BY ARCHITECT.
02	ALUMINUM SLIDING GLASS DOOR ASSEMBLY: W/ LAMINATED TINTED GLASS W/ A HIGH PERFORMANCE COATING, TO MEET WIND LOAD REQUIREMENTS.
03	ALUMINUM WINDOW ASSEMBLY: W/ LAMINATED TINTED GLASS W/ A HIGH PERFORMANCE COATING, TO MEET WIND LOAD REQUIREMENTS. PROVIDE SAMPLES TO ARCHITECT FOR REVIEW.
04	ALUMINUM STOREFRONT ASSEMBLY: LAMINATED TINTED GLASS W/ A HIGH PERFORMANCE COATING, TO MEET WIND LOAD REQUIREMENTS. PROVIDE SAMPLES TO ARCHITECT FOR REVIEW.
05	ARCHITECTURAL FRAME
06	42" A.F.F. RAILING ENCLOSURE AT BALCONY & TERRACE
07	ROOF PARAPET



ELEVATION B

SCALE: 1"= 3/32"

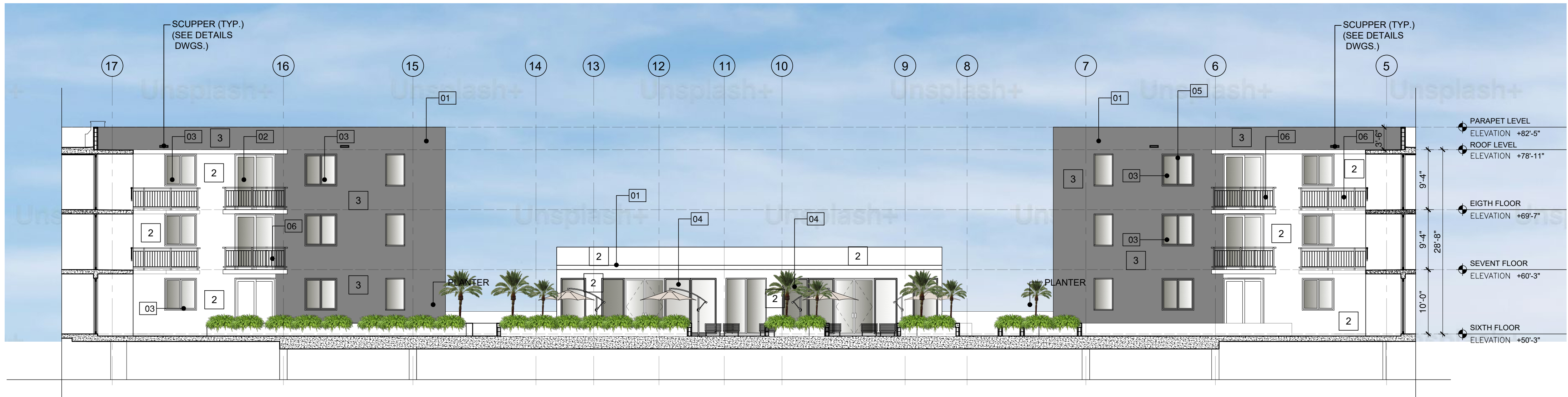


ELEVATION D

SCALE: 1"= 3/32"

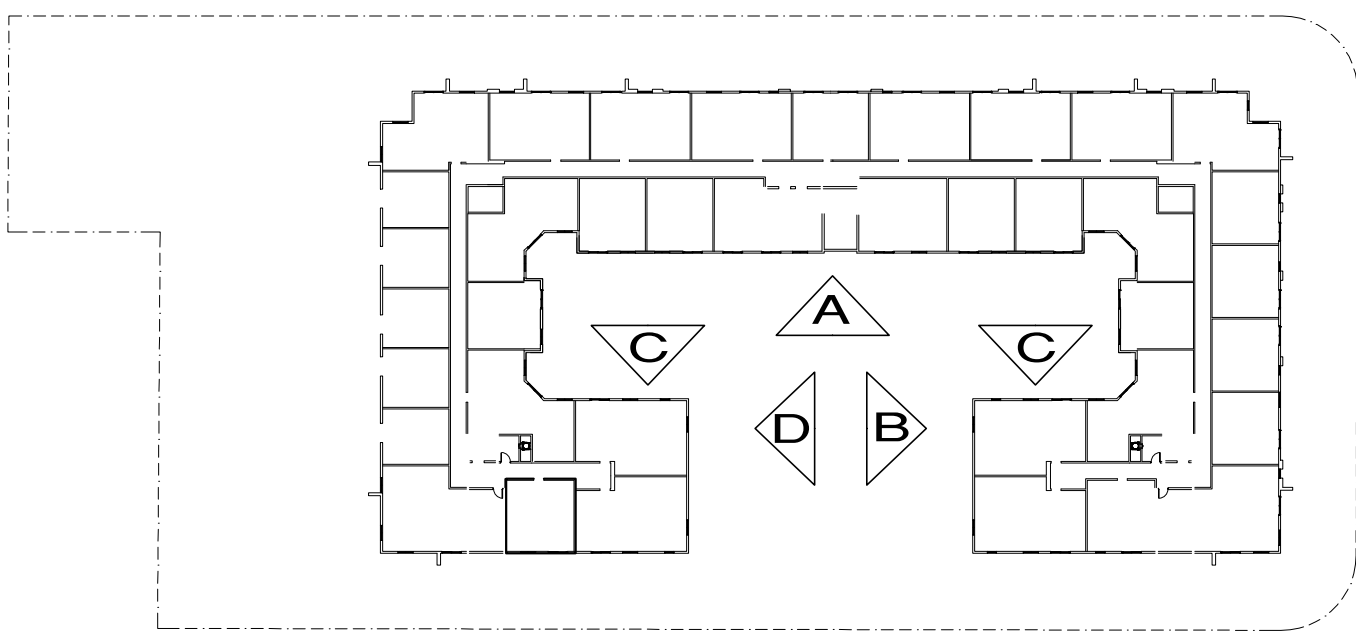
COLOR PALETTE

- 1 BENJAMIN MOOR SILVER SONG (1557)
- 2 BENJAMIN MOOR SUPER WHITE OC-152
- 3 BENJAMIN MOOR AMHERST GRAY HC-167



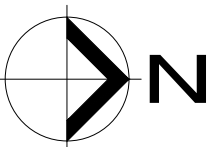
ELEVATION C

SCALE: 1"= 3/32"



KEY PLAN

SCALE: 1/64"= 20'



PROJECT No.:	REV. #	DATE
DESIGNED BY:	O.M.	
DRAWN BY:	3	
CHECKED BY:	O.M.	
ISSUE DATE:	09-01-2022	
DRAWING SCALE:	AS SHOWN	

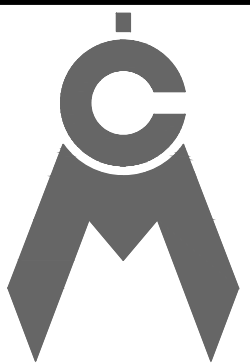
208 NORTH FEDERAL HWY
POMPAHO BEACH, FL. 33062



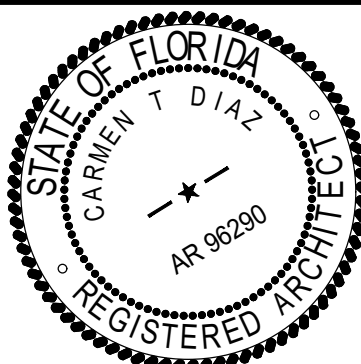
PZ21-12000041

06/06/2023

CAYMARES MARTIN
Architectural & Engineering Design
AA 26001552 CA 27136
5001 SW 74th Ct, Ste 100
Miami, FL 33155
Ph: (305) 669-5040 Fax: (305) 669-5041
www.caymartdesign.com



ARCH. CARMEN T. DIAZ
LIC # AR 96290
5001 SW 74th COURT
SUITE 100
MIAMI, FL 33155
TEL (305) 669-5040
FAX (305) 669-5041



SHEET No:

A-3.3.3